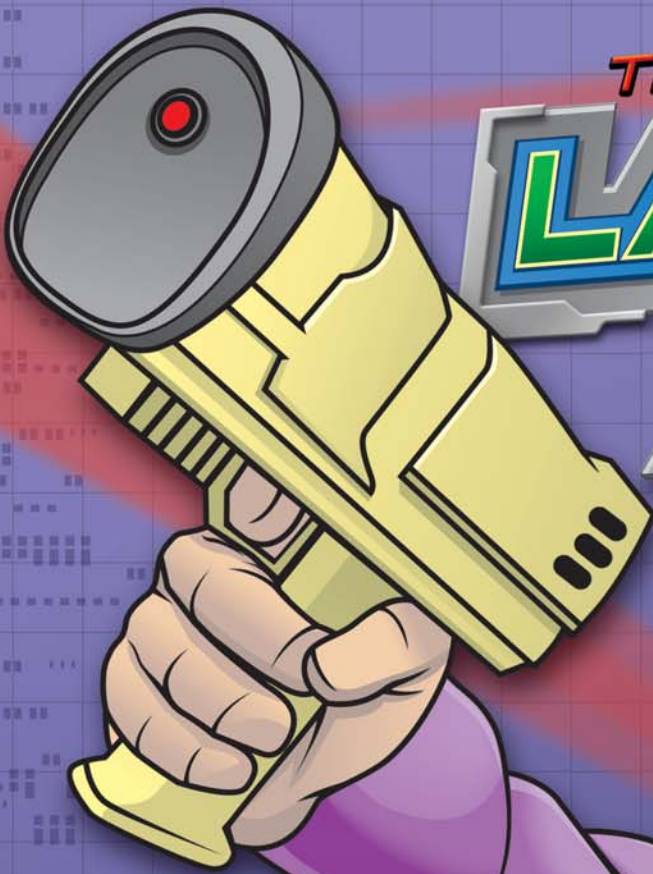


THE ULTIMATE

# LASER ARENA

YOU'LL FEEL  
THE  
**#HEAT!**



## YOUR WEAPON



NO VESTS  
NO CORDS  
NO HEADSETS

## FEATURES

- AUDIO INFO SYSTEM
- VIBRATION AND BEACON HIT INDICATION SYSTEM
- UNLIMITED, RAPID AND BOMB SHOOTING MODES

## YOUR ARENA

- A BURNED-OUT WRECK OF A HUGE SPACE STATION, COMPLETE WITH FOG AND STROBE LIGHTS.
- INTERACT WITH THE SYSTEM AS WELL AS OTHER PLAYERS BY FINDING SPECIAL BONUS TARGETS FOR EXTRA POINTS, BUT WATCH OUT, THEY FIRE BACK!
- EACH TARGET IS CAPABLE OF OPERATING ANY KIND OF SPECIAL EFFECTS SUCH AS OPENING DOORS, LIGHTING PASSAGE WAYS AND ACTIVATING ROBOTICS.

**888-655-7263**  
**WWW.KRAMERINTL.COM**

**KRAMER**  
ENTERTAINMENT, INC.



## Length of Program:

Approximatley 6 Hours

## Includes:

- Delivery and Setup
- Non-Stop Operation
- Professionally Uniformed Technicians
- Complete Tear-down and Removal
- Event Insurance (liability, equipment, personnel)

## Requirements

**Power:** Three (3) separate, 110 Volt, 20 amp circuits. The show carries it's own extension cords to accommodate most remote locations.

**Technical:** Performance area - 40' x 50', and a 10' ceiling. If show is indoors, door openings must be at least 36" wide and 6'8" high. Unit cannot be carried up stairs.

**Misc:** Hotel accommodations consisting of two (2) single rooms for **LASER ARENA** crew.



3849 Lake Michigan Dr., Grand Rapids, MI 49544  
Tel (616) 791.0095 • Toll Free 1.888.655.7263 • Fax (616) 791.4419  
E-Mail: [kramerintl@msn.com](mailto:kramerintl@msn.com) • Website: [www.kramerintl.com](http://www.kramerintl.com)